

## Touchclone TPH Box Help File



**Touchclone™**... *keys cloned at a touch*

From version 1.1.4.0, **Touchclone™** will be able to use a JMA TPH box connected to the PC for ID46 cloning, without needing an internet connection.

**You must tell the software** that you wish to use the TPH box rather than the default **Touchclone™** ID46 server, and **you need to specify the COM port** that the box can be found at.

## Step 1:

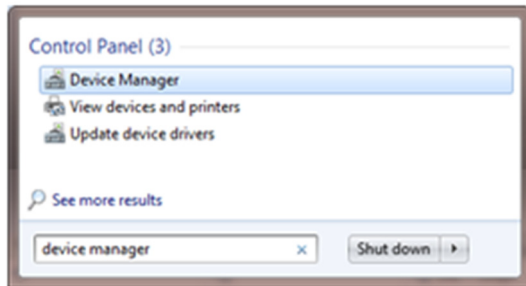
Connect the TPH box to the computer and ensure it is powered.

## Step 2:

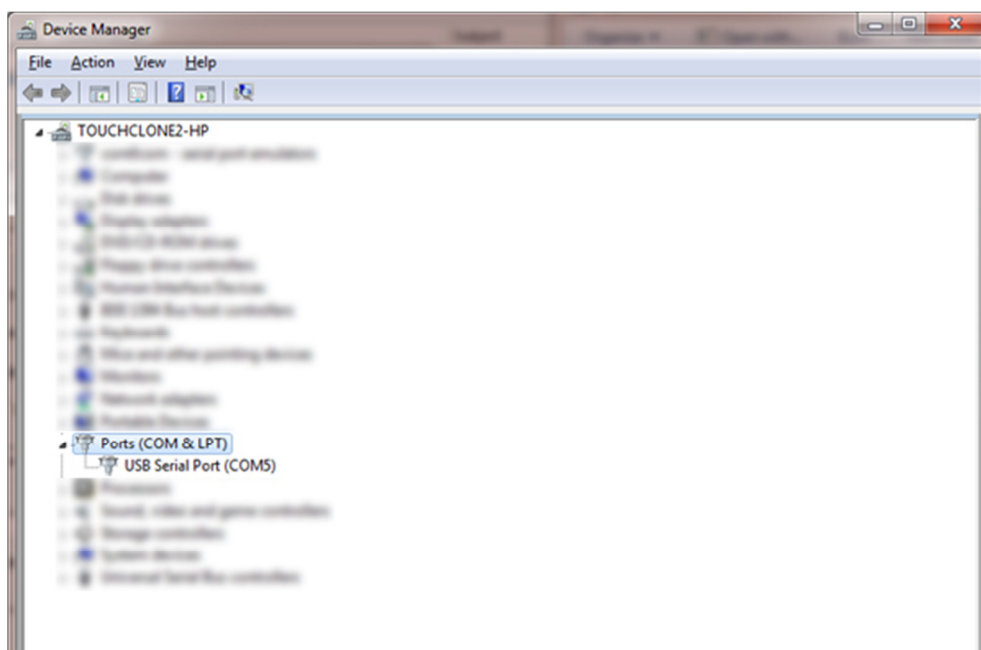
If you know the COM port value please skip to Step 3. If you don't know this information, you can use the Device Manager application in Windows to find out.

Disconnect all other devices from the PC.

Click start, and type "Device Manager" in the search box.



When Device Manager open you should get a box like this:

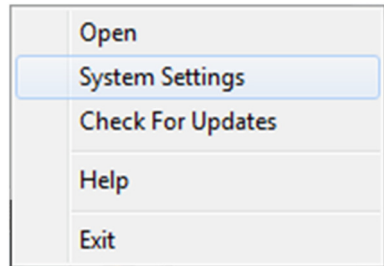


Under the section "Ports (COM and LPT)" you should see a list of COM ports. If you have more than one displayed, you can either try them all, or if you are using a USB to serial convertor, you can disconnect and reconnect the lead to see which port disappears and reappears.

Once you know the COM port make a note of it as you'll need it in the next step.

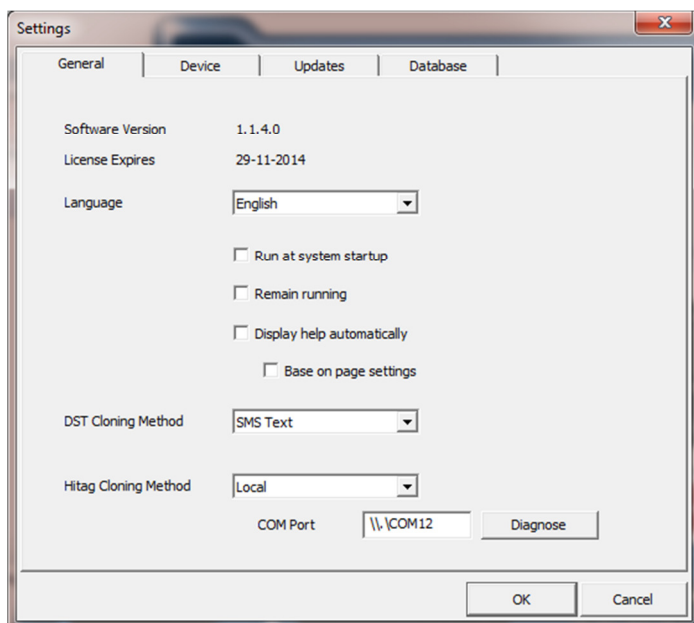
### Step 3:

Right click the **Touchclone™** icon in the task bar and select System Settings:



### Step 4:

In the settings pages that appears, change the Hitag Cloning Method to Local.



A box will appear below for you to type in the Com port.

If your com port number is below 10, this should be in the format "COMX", where X is the COM port number.

If your com port number is 10 or higher, this should be in the format "\\.\COMX", where X is the COM port number.

### Step 5:

Click 'Diagnose' to test the connection to the box.